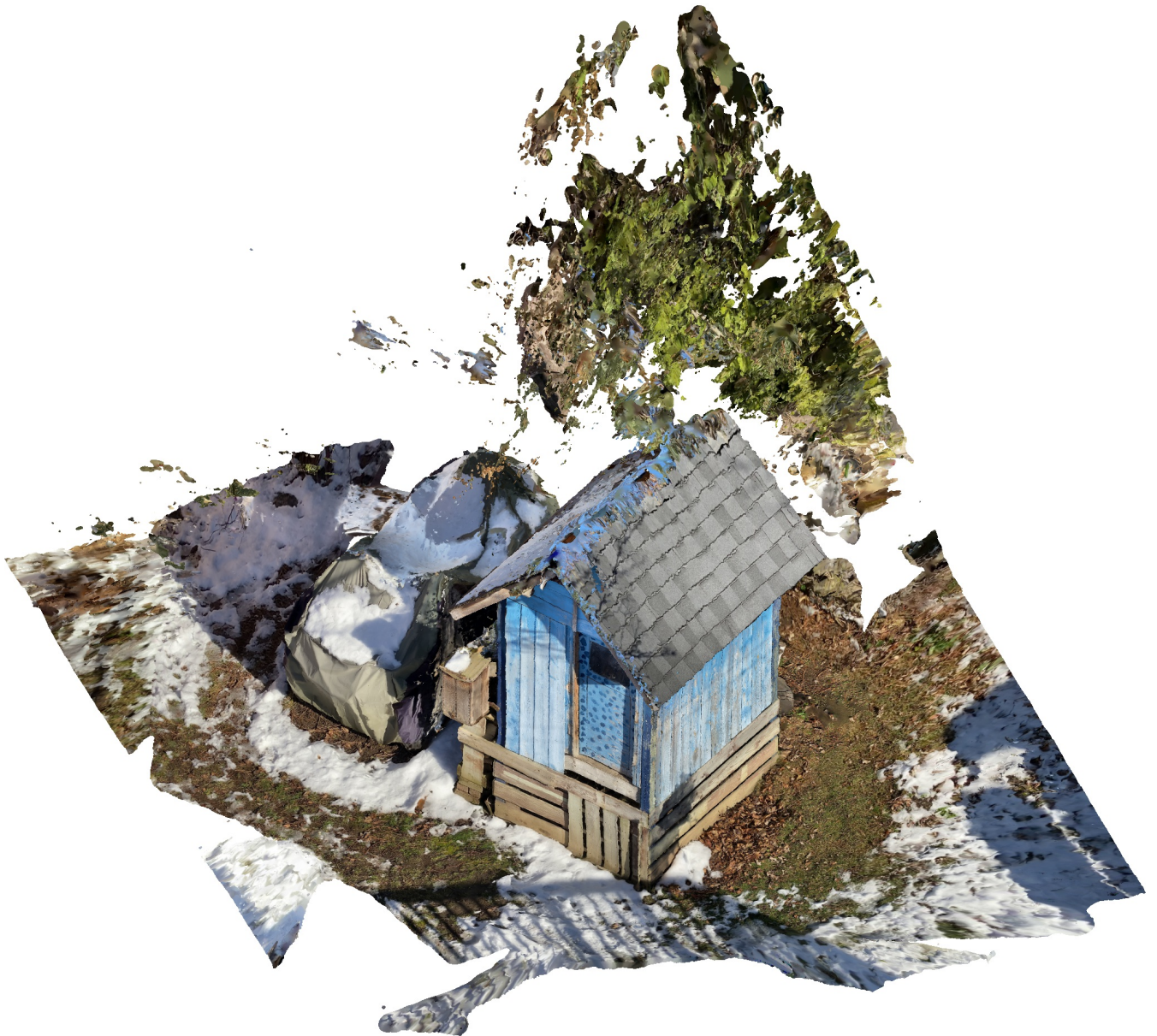


Agisoft Metashape

Processing Report
08 December 2020



Survey Data

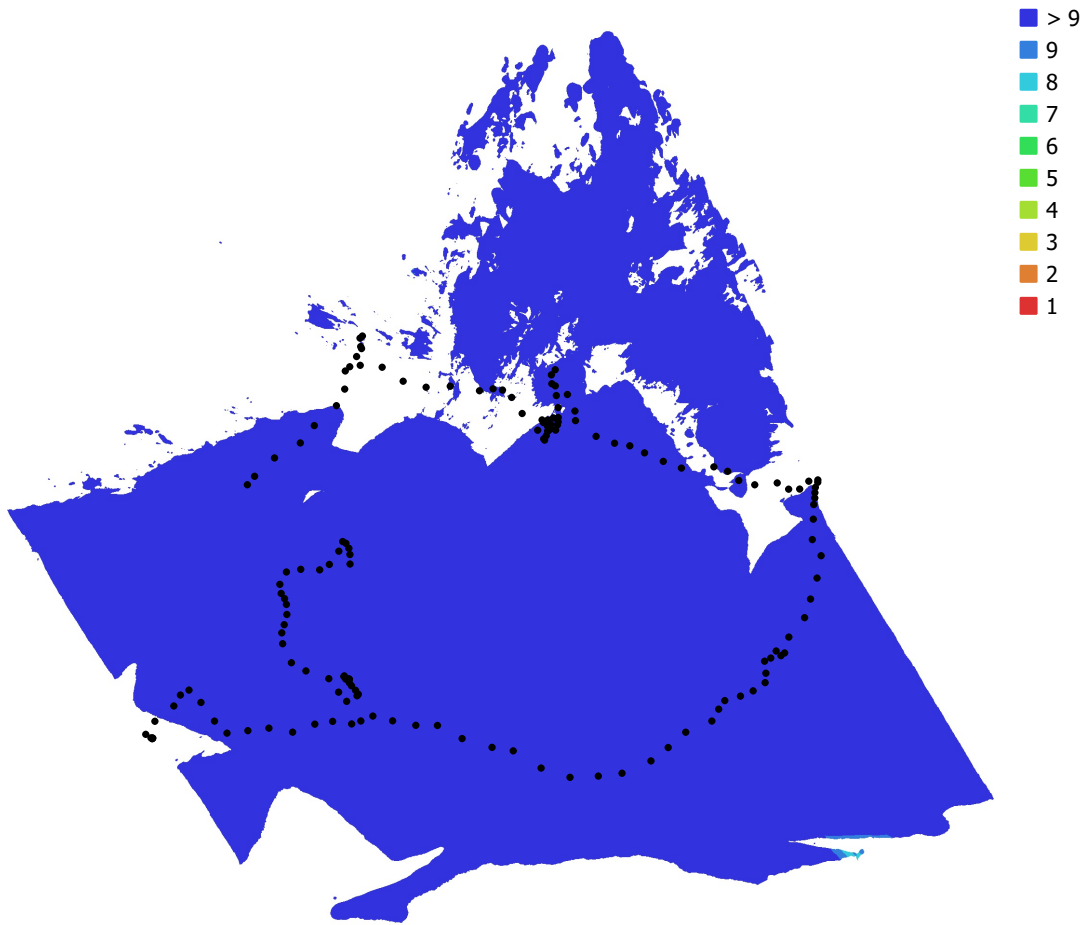


Fig. 1. Camera locations and image overlap.

Number of images: 187

Camera stations: 160

Tie points: 108,615

Projections: 301,073

Reprojection error: 1.28 pix

Camera Model	Resolution	Focal Length	Pixel Size	Precalibrated
unknown	3840 x 2160	unknown	unknown	No

Table 1. Cameras.

Camera Calibration

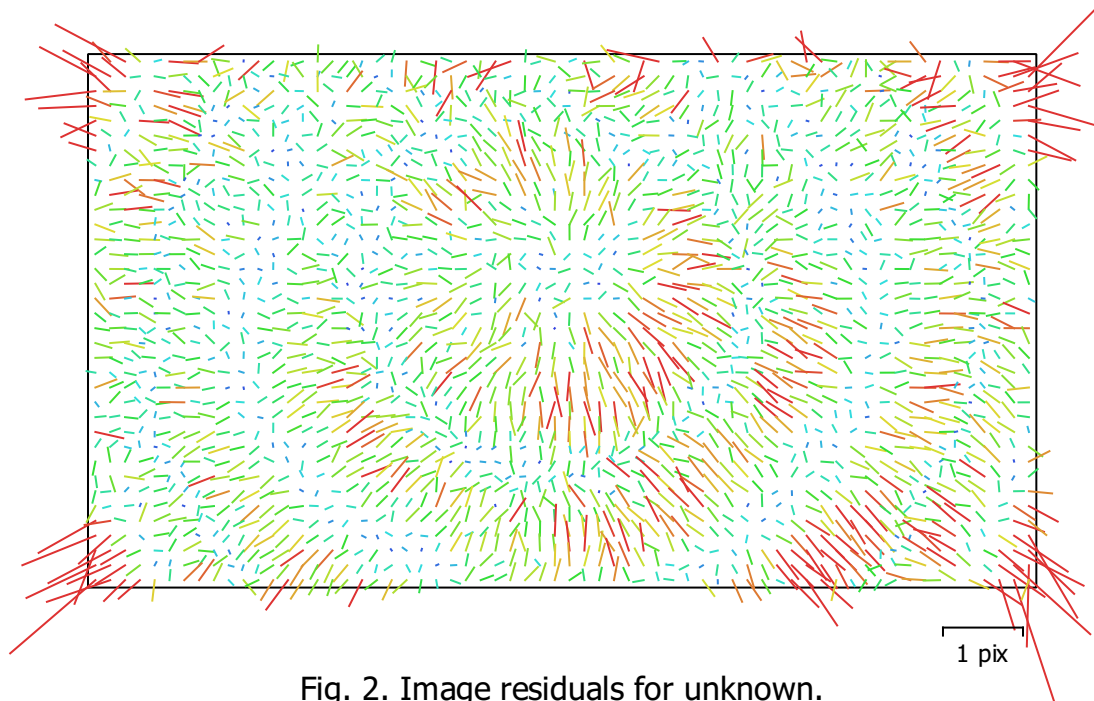


Fig. 2. Image residuals for unknown.

unknown
187 images

Type **Frame** Resolution **3840 x 2160** Focal Length **unknown** Pixel Size **unknown**

	Value	Error	F	Cx	Cy	K1	K2	K3	P1	P2
F	3184.65	0.43	1.00	0.06	-0.05	0.26	-0.19	0.26	0.07	-0.03
Cx	-11.51	0.41		1.00	-0.03	0.10	-0.13	0.15	0.89	-0.02
Cy	-14.8098	0.42			1.00	-0.02	-0.02	0.03	-0.05	0.91
K1	0.185269	0.00038				1.00	-0.96	0.91	0.09	-0.01
K2	-0.73315	0.0019					1.00	-0.98	-0.12	-0.02
K3	0.969192	0.0031						1.00	0.15	0.03
P1	0.000342932	4e-05							1.00	-0.04
P2	0.000229742	4.3e-05								1.00

Table 2. Calibration coefficients and correlation matrix.

Digital Elevation Model

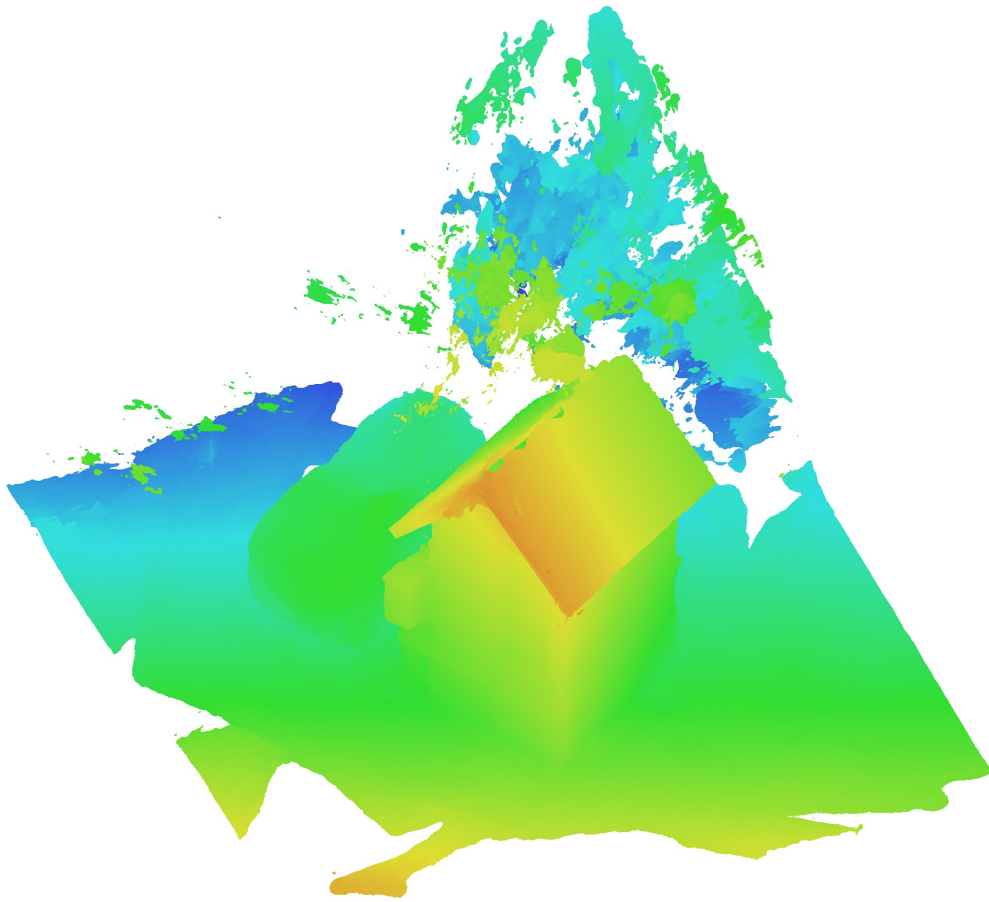


Fig. 3. Reconstructed digital elevation model.

Processing Parameters

General

Cameras	187
Aligned cameras	160

Point Cloud

Points	108,615 of 146,396
RMS reprojection error	0.159894 (1.28212 pix)
Max reprojection error	0.483344 (46.944 pix)
Mean key point size	8.26535 pix
Point colors	3 bands, uint8
Key points	No
Average tie point multiplicity	2.83207

Alignment parameters

Accuracy	Medium
Generic preselection	Yes
Reference preselection	Sequential
Key point limit	150,000
Tie point limit	10,000
Guided image matching	No
Adaptive camera model fitting	No
Matching time	41 seconds
Matching memory usage	354.41 MB
Alignment time	56 seconds
Alignment memory usage	92.65 MB
Software version	1.6.5.11249
File size	9.26 MB

Depth Maps

Count	160
Depth maps generation parameters	
Quality	Medium
Filtering mode	Moderate
Processing time	1 minutes 48 seconds
File size	113.86 MB

Dense Point Cloud

Points	17,502,417
Point colors	3 bands, uint8
Depth maps generation parameters	
Quality	Medium
Filtering mode	Moderate
Processing time	1 minutes 48 seconds
Dense cloud generation parameters	
Processing time	1 minutes 52 seconds
Software version	1.6.5.11249
File size	233.61 MB

Model

Faces	1,166,819
Vertices	595,712
Vertex colors	3 bands, uint8
Texture	4,096 x 4,096, 4 bands, uint8
Depth maps generation parameters	
Quality	Medium

Filtering mode	Moderate
Processing time	1 minutes 48 seconds
Reconstruction parameters	
Surface type	Arbitrary
Source data	Dense cloud
Interpolation	Enabled
Strict volumetric masks	No
Processing time	11 minutes 43 seconds
Memory usage	9.17 GB
Texturing parameters	
Mapping mode	Generic
Blending mode	Mosaic
Texture size	4,096
Enable hole filling	Yes
Enable ghosting filter	Yes
UV mapping time	9 minutes 6 seconds
UV mapping memory usage	1.88 GB
Blending time	27 seconds
Blending memory usage	1.18 GB
Software version	1.6.5.11249
File size	82.31 MB
System	
Software name	Agisoft Metashape Standard
Software version	1.6.5 build 11249
OS	Windows 64 bit
RAM	31.88 GB
CPU	AMD Ryzen Threadripper 1950X 16-Core Processor
GPU(s)	GeForce RTX 2070